

Write your name here

Surname

Other names

Pearson
Edexcel GCE

Centre Number

--	--	--	--	--

Candidate Number

--	--	--	--

Core Mathematics C1

Advanced Subsidiary



Wednesday 17 May 2017 – Morning

Time: 1 hour 30 minutes

Paper Reference

6663/01

You must have:

Mathematical Formulae and Statistical Tables (Pink)

Total Marks

Calculators may NOT be used in this examination.

Instructions

- Use **black** ink or ball-point pen.
- If pencil is used for diagrams/sketches/graphs it must be dark (HB or B). Coloured pencils and highlighter pens must not be used.
- **Fill in the boxes** at the top of this page with your name, centre number and candidate number.
- Answer **all** questions and ensure that your answers to parts of questions are clearly labelled.
- Answer the questions in the spaces provided – *there may be more space than you need.*
- You should show sufficient working to make your methods clear. Answers without working may not gain full credit.

Information

- The total mark for this paper is 75.
- The marks for **each** question are shown in brackets – *use this as a guide as to how much time to spend on each question.*

Advice

- Read each question carefully before you start to answer it.
- Try to answer every question.
- Check your answers if you have time at the end.

Turn over ►

P48760A

©2017 Pearson Education Ltd.

1/1/1/1/



Pearson

1. Find

$$\int \left(2x^5 - \frac{1}{4x^3} - 5 \right) dx$$

giving each term in its simplest form.

(4)

DO NOT WRITE IN THIS AREA

DO NOT WRITE IN THIS AREA

DO NOT WRITE IN THIS AREA



Question 1 continued

Lined writing area consisting of multiple horizontal lines for text entry.

(Total 4 marks)

Q1



DO NOT WRITE IN THIS AREA

DO NOT WRITE IN THIS AREA

DO NOT WRITE IN THIS AREA

Question 2 continued

DO NOT WRITE IN THIS AREA

DO NOT WRITE IN THIS AREA

DO NOT WRITE IN THIS AREA

Q2

(Total 5 marks)



P 4 8 7 6 0 A 0 5 2 8

3. A sequence a_1, a_2, a_3, \dots is defined by

$$a_1 = 1$$

$$a_{n+1} = \frac{k(a_n + 1)}{a_n}, \quad n \geq 1$$

where k is a positive constant.

- (a) Write down expressions for a_2 and a_3 in terms of k , giving your answers in their simplest form. **(3)**

Given that $\sum_{r=1}^3 a_r = 10$

- (b) find an exact value for k . **(3)**

DO NOT WRITE IN THIS AREA



Question 3 continued

DO NOT WRITE IN THIS AREA

DO NOT WRITE IN THIS AREA

DO NOT WRITE IN THIS AREA

Lined area for writing the answer to Question 3.

(Total 6 marks)

Q3



P 4 8 7 6 0 A 0 7 2 8

4. A company, which is making 140 bicycles each week, plans to increase its production. The number of bicycles produced is to be increased by d each week, starting from 140 in week 1, to $140 + d$ in week 2, to $140 + 2d$ in week 3 and so on, until the company is producing 206 in week 12.

(a) Find the value of d .

(2)

After week 12 the company plans to continue making 206 bicycles each week.

(b) Find the total number of bicycles that would be made in the first 52 weeks starting from and including week 1.

(5)

Handwritten area with horizontal lines for writing answers.

DO NOT WRITE IN THIS AREA

DO NOT WRITE IN THIS AREA

DO NOT WRITE IN THIS AREA



Question 4 continued

DO NOT WRITE IN THIS AREA

DO NOT WRITE IN THIS AREA

DO NOT WRITE IN THIS AREA

Q4

(Total 7 marks)



5.

$$f(x) = x^2 - 8x + 19$$

- (a) Express $f(x)$ in the form $(x + a)^2 + b$, where a and b are constants. (2)

The curve C with equation $y = f(x)$ crosses the y -axis at the point P and has a minimum point at the point Q .

- (b) Sketch the graph of C showing the coordinates of point P and the coordinates of point Q . (3)

- (c) Find the distance PQ , writing your answer as a simplified surd. (3)

DO NOT WRITE IN THIS AREA

DO NOT WRITE IN THIS AREA

DO NOT WRITE IN THIS AREA



Question 5 continued

DO NOT WRITE IN THIS AREA

DO NOT WRITE IN THIS AREA

DO NOT WRITE IN THIS AREA

(Total 8 marks)

Q5



P 4 8 7 6 0 A 0 1 1 2 8

Question 6 continued

DO NOT WRITE IN THIS AREA

DO NOT WRITE IN THIS AREA

DO NOT WRITE IN THIS AREA

Q6

(Total 6 marks)



P 4 8 7 6 0 A 0 1 3 2 8

Question 7 continued

DO NOT WRITE IN THIS AREA

DO NOT WRITE IN THIS AREA

DO NOT WRITE IN THIS AREA

Q7

(Total 9 marks)



P 4 8 7 6 0 A 0 1 5 2 8

8.

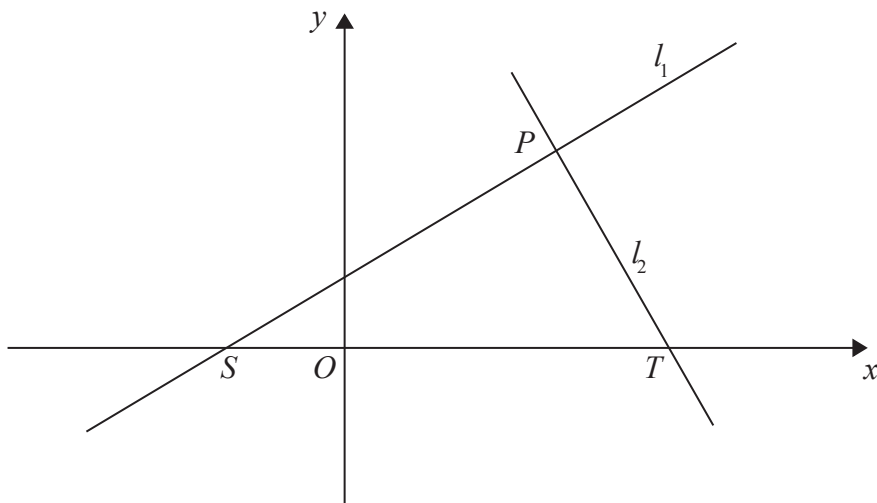


Figure 1

The straight line l_1 , shown in Figure 1, has equation $5y = 4x + 10$

The point P with x coordinate 5 lies on l_1

The straight line l_2 is perpendicular to l_1 and passes through P .

- (a) Find an equation for l_2 , writing your answer in the form $ax + by + c = 0$ where a , b and c are integers. (4)

The lines l_1 and l_2 cut the x -axis at the points S and T respectively, as shown in Figure 1.

- (b) Calculate the area of triangle SPT . (4)

DO NOT WRITE IN THIS AREA

DO NOT WRITE IN THIS AREA

DO NOT WRITE IN THIS AREA



Question 8 continued

DO NOT WRITE IN THIS AREA

DO NOT WRITE IN THIS AREA

DO NOT WRITE IN THIS AREA

Lined writing area for the answer to Question 8.



Question 8 continued

DO NOT WRITE IN THIS AREA

DO NOT WRITE IN THIS AREA

DO NOT WRITE IN THIS AREA

Q8

(Total 8 marks)



9. (a) On separate axes sketch the graphs of

(i) $y = -3x + c$, where c is a positive constant,

(ii) $y = \frac{1}{x} + 5$

On each sketch show the coordinates of any point at which the graph crosses the y -axis and the equation of any horizontal asymptote.

(4)

Given that $y = -3x + c$, where c is a positive constant, meets the curve $y = \frac{1}{x} + 5$ at two distinct points,

(b) show that $(5 - c)^2 > 12$

(3)

(c) Hence find the range of possible values for c .

(4)

DO NOT WRITE IN THIS AREA

DO NOT WRITE IN THIS AREA

DO NOT WRITE IN THIS AREA



Question 9 continued

DO NOT WRITE IN THIS AREA

DO NOT WRITE IN THIS AREA

DO NOT WRITE IN THIS AREA



Question 9 continued

DO NOT WRITE IN THIS AREA

DO NOT WRITE IN THIS AREA

DO NOT WRITE IN THIS AREA

Q9

--	--

(Total 11 marks)



10.

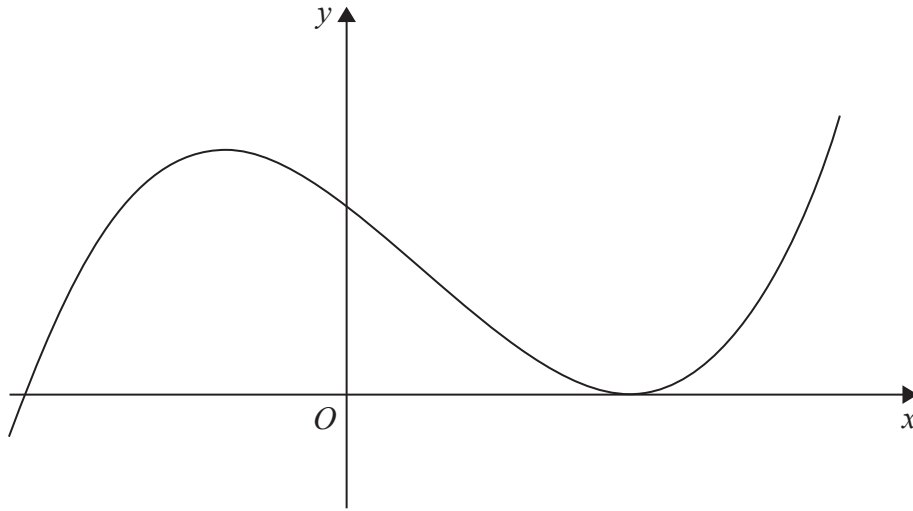


Figure 2

Figure 2 shows a sketch of part of the curve $y = f(x)$, $x \in \mathbb{R}$, where

$$f(x) = (2x - 5)^2(x + 3)$$

(a) Given that

- (i) the curve with equation $y = f(x) - k$, $x \in \mathbb{R}$, passes through the origin, find the value of the constant k ,
- (ii) the curve with equation $y = f(x + c)$, $x \in \mathbb{R}$, has a minimum point at the origin, find the value of the constant c .

(3)

(b) Show that $f'(x) = 12x^2 - 16x - 35$

(3)

Points A and B are distinct points that lie on the curve $y = f(x)$.

The gradient of the curve at A is equal to the gradient of the curve at B .

Given that point A has x coordinate 3

(c) find the x coordinate of point B .

(5)

DO NOT WRITE IN THIS AREA

DO NOT WRITE IN THIS AREA

DO NOT WRITE IN THIS AREA



Question 10 continued

DO NOT WRITE IN THIS AREA

DO NOT WRITE IN THIS AREA

DO NOT WRITE IN THIS AREA

Lined area for writing the answer to Question 10.



P 4 8 7 6 0 A 0 2 7 2 8

Question 10 continued

28 horizontal lines for writing.

DO NOT WRITE IN THIS AREA

DO NOT WRITE IN THIS AREA

DO NOT WRITE IN THIS AREA

Q10

--	--

(Total 11 marks)

TOTAL FOR PAPER: 75 MARKS

END

